

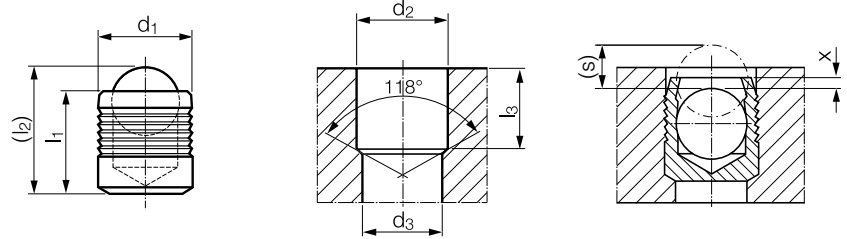
KOENIG EXPANDER® SEALING PLUGS

Series CV 588 Inch



Material:

Sleeve: Stainless Steel (316) ASTM A580, Passivate, QQ-P-35C
 Ball: Stainless Steel, AISI 316, Wax Film Lubrication (Diameter Dependant)



Part Number	d ₁	l ₁	(l ₂) ~ Ref.	d ₂ +0.004 0	d ₃ max.	l ₃ min.	x ±0.004	(s) ~ Ref.	Packaging Unit*	Weight in gram/pcs.
CV 588-156	0.156	0.158	0.21	0.1562	0.130	0.149	0.008	0.053	1000	0.35
CV 588-187	0.187	0.217	0.27	0.1875	0.160	0.208	0.010	0.066	1000	0.71
CV 588-218	0.218	0.217	0.28	0.2187	0.190	0.208	0.010	0.078	1000	0.94
CV 588-250	0.250	0.256	0.34	0.2500	0.220	0.247	0.010	0.094	1000	1.42
CV 588-281	0.281	0.296	0.40	0.2812	0.250	0.287	0.010	0.110	1000	2.92
CV 588-312	0.312	0.335	0.46	0.3125	0.281	0.326	0.010	0.129	1000	3.88
CV 588-343	0.343	0.394	0.52	0.3437	0.312	0.385	0.010	0.140	500	4.11
CV 588-375	0.375	0.394	0.54	0.3750	0.343	0.385	0.010	0.153	500	4.86

Dimensions in inches

*Standard pack quantities may vary by sales organization

Not all items in stock – MOQ and production lead times may apply

PRESSURE PERFORMANCE

Series CV 588 Inch	①	③	④	⑥	⑧
	ETG-100 / 44SMn28 AISI 1144	EN 1563: GJS-600-3 ASTM A536: 80-60-03	EN 1563: GJS-450-10 ASTM A536: 65-45-12	AlCu4Mg1 / EN AW-2024-T3 AA: 2024 T4/T6*	G-AlSi7Mg / EN-AC-42100 ASTM/UNS: A356
Base Material of the Installation					
Ø 0.156 – 0.375	1000 bar / 14500 psi 350 bar / 5000 psi				

Proof Pressure Test - ⑥

Max. Allowable Working Pressure = Nominal Pressure

*SFC KOENIG's North American Engineering Department utilizes 2024-T4/T6 as a test base material.